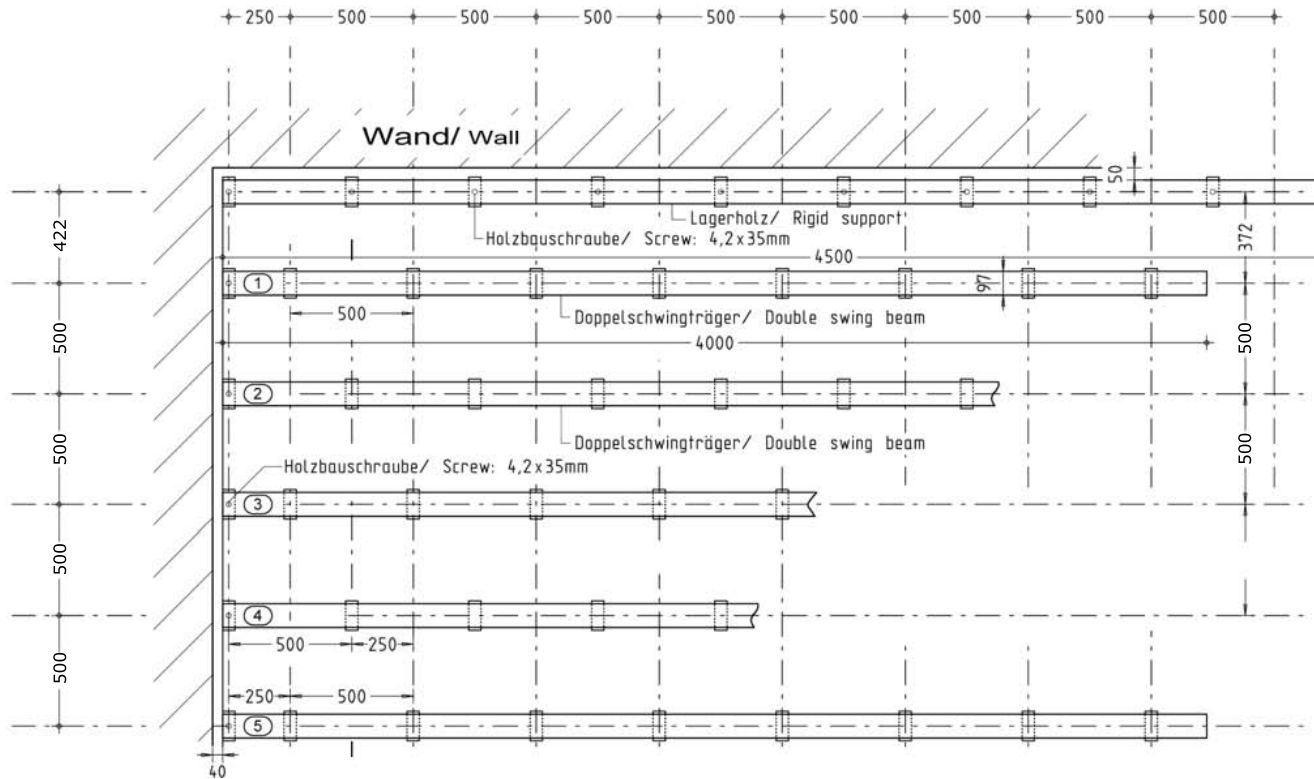


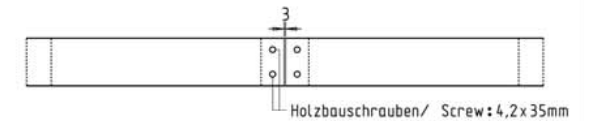
Doubleflex Stadium

Verlegeplan: Lagerholz und Doppelschwingträger Plan for installation: Rigid support and Double swing beam

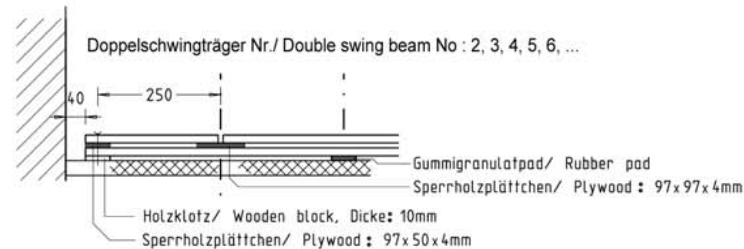
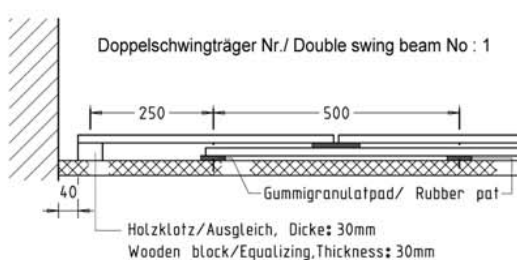


Lagerholz bestehend aus / Rigid support consisting of:
2 Blindbretter/ 2 counter floor: 4500 x 97 x 16mm or 4000 x 97 x 16mm.
verschraubt mit Holzbauschraube/ screwed together 4,2 x 35mm
Versatzmaß/ overlapping part: 200mm

Doppelschwingträgerverbindung Fixing for Double swing beam

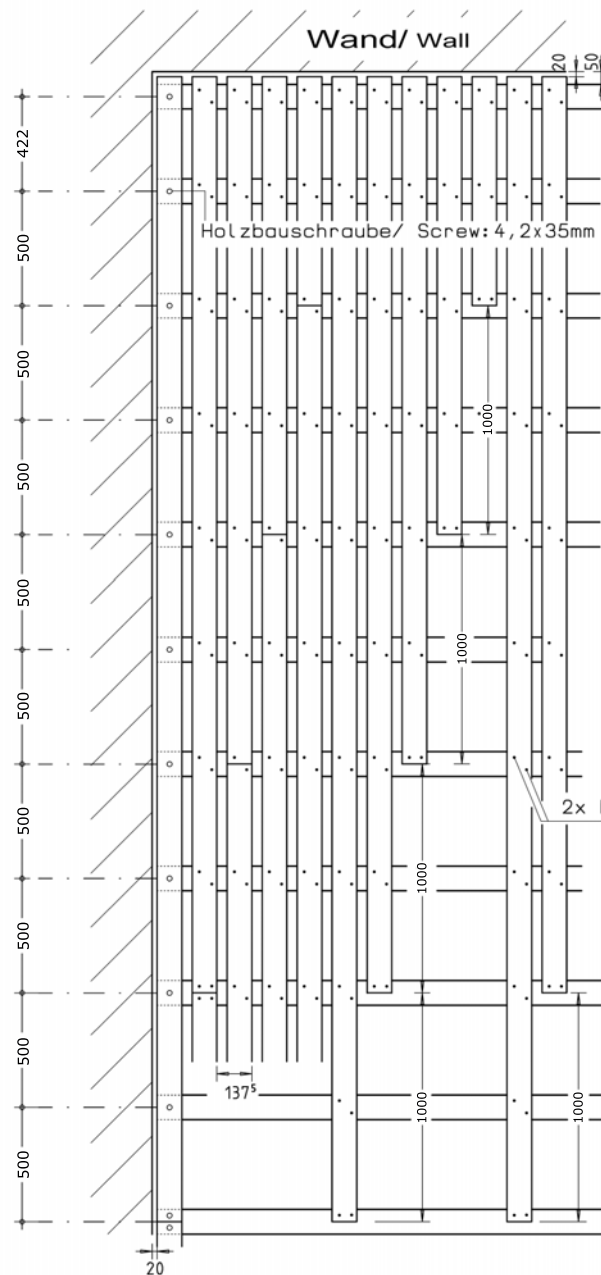


Verlegebeginn an der Wand/ Start of the installation at the wall M: 1:10

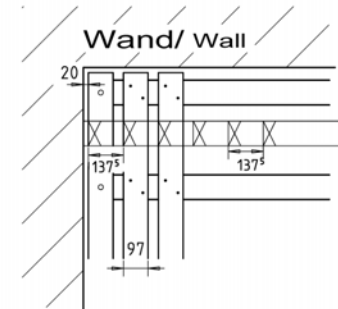


Doubleflex Stadium

Verlegeplan: Blindboden Plan for Installation: Counter floor



Blindboden : Einteilungslehre Counter floor: Distribution of the gauge



2x Nägel/ Nails : 2,2x32mm

Bei 1. Brettreihe, Blindboden auf jedem Doppelschwingträger 1x verschrauben/
The first row of the counter floor are fixed with one screw on each double swing beam.

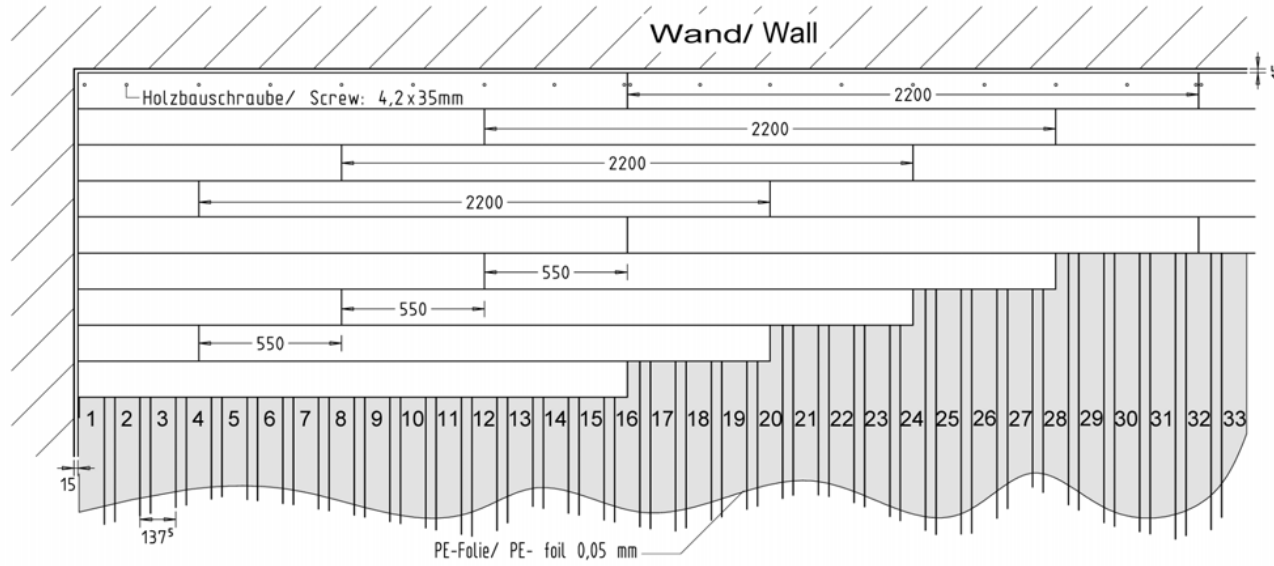
BOEN Sportparkett Länge/ Length of BOEN Sports parquet : 2200mm
Blindbodenversatz/ Measure of displacing: 1000mm

Doubleflex Stadium



Verlegeplan: Sportparkett

Plan for installation :Sports parquet M: 1:20



Verlegeplan: Sportparkett

Plan for installation: Sports parquet

M: 1:10

