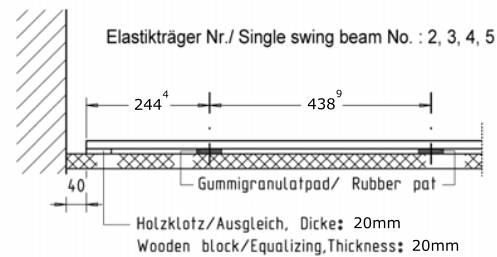
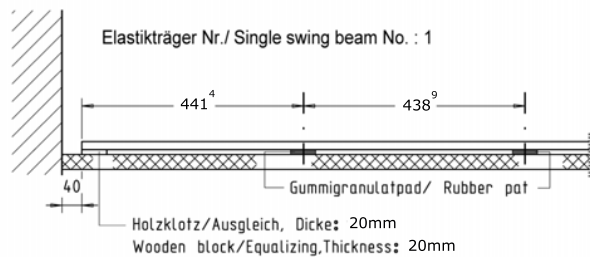
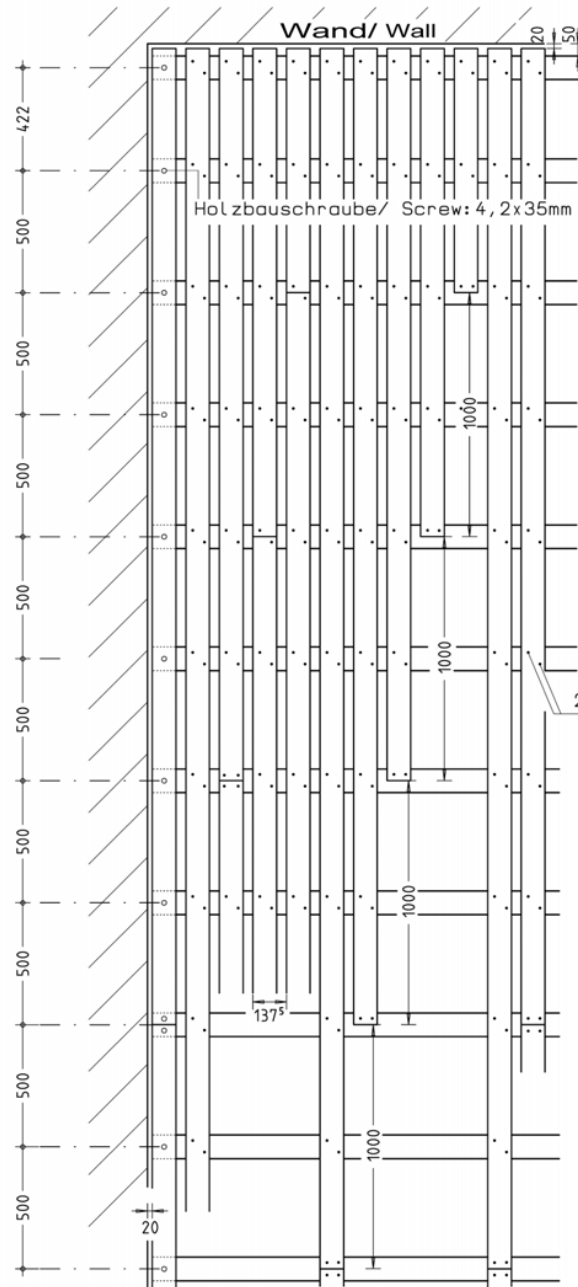
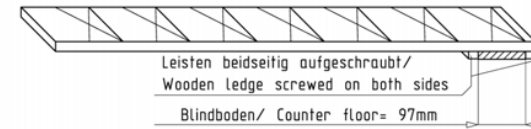
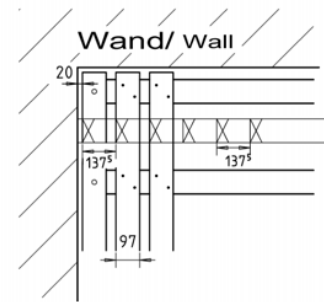


Verlegebeginn an der Wand/ Start of the installation at the wall M: 1:10





Blindboden : Einteilungslehre  
Counter floor: Distribution of the gauge



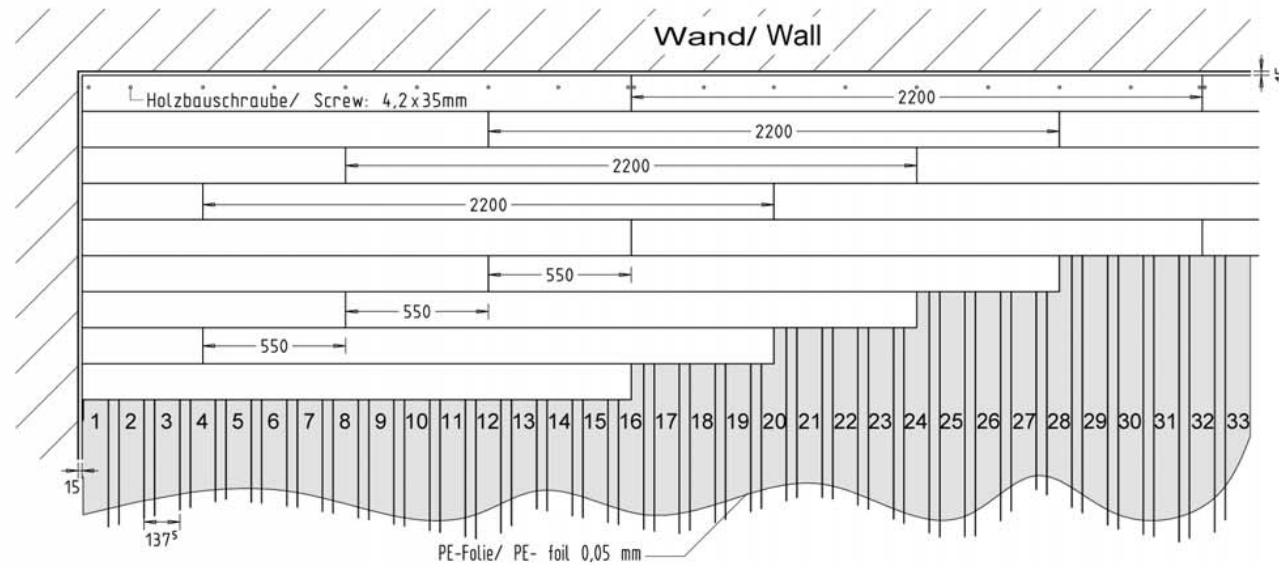
2x Nägel/ Nails: 2, 2x32mm

Bei 1. Brettreihe, Blindboden auf jedem Doppelschwingträger 1x verschrauben/  
The first row of the counter floor are fixed with one screw on each swing beam.

BOEN Sportparkett Länge/ Length of BOEN Sports parquet: 2200mm  
Blindbodenversatz/ Measure of displacing: 1000mm

Verlegeplan: Sportparkett

Plan for installation :Sports parquet M: 1:20



Verlegeplan: Sportparkett

Plan for installation: Sports parquet

M: 1:10

